

friulinox

**COLD ROOMS
QUICK BOX**

COLD ROOMS - QUICK BOX

■ COLD ROOMS MONOBLOCKS

The Friulinox mini cold rooms, with their 70 mm thickness, are designed to solve any application requirement. They are available in depths from 120 cm to 200 cm, and in widths from 120 cm to 285 cm.

Insulation is guaranteed by self-extinguishing closed cell polyurethane, injected with a density of 42 kg/m³.

The Friulinox mini cold rooms are built according to very high professional standards based on the Friulinox tradition: bordered, tank-like floor; rounded horizontal corners (r=14mm); panels covered with white plasticised-zinc sheet with non-toxic coating and zinc plated hooks.

Friulinox also supplies internal Aluplast shelves upon request, to guarantee the utmost accessories as standard and ideal use of the space inside.

Our offering is complemented by straddle-mounted and ceiling monoblock refrigerated units.

As far as assembly is concerned, the Friulinox cold rooms will solve all your preservation problems in less than one hour!





Italian quality

All the Friulinox cold rooms and monoblocks are entirely made in our factories using high quality materials. Moreover, they undergo meticulously strict quality controls and operating tests to ensure maximum efficiency.



Small details lead to great preservation

The door is hinged on the right, with a keylock and a safety handle for opening from the inside.

There is no added cost for doors hinged on the left.

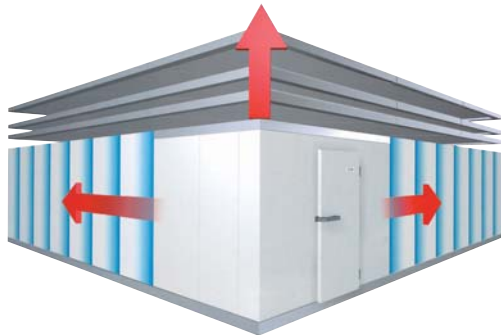
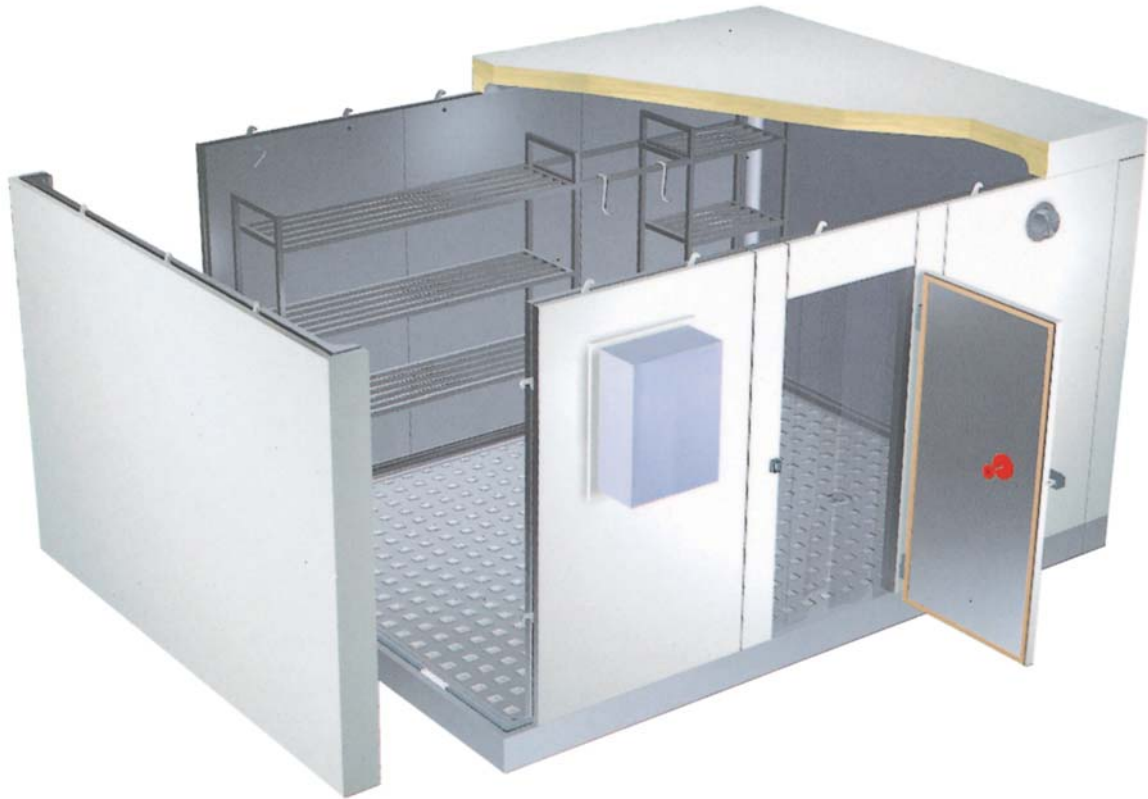
Both TN (CHILLER) and BT (FREEZER) versions have doors equipped with anti-condensate heater in the doorframe.

The mini cold rooms are equipped with an internal light and a micro door switch that stops the fans and turns on the light when the door is opened. The mini cold room package consists of a cold room and the new straddle-mounted and/or ceiling monoblock refrigerated units in both the TN (CHILLER) or BT (FREEZER) versions. The digital monoblock control is complete with visual and audible operating alarms. Drilling of the panel where the monoblock will be positioned is supplied as standard for its installation.

However, the cold room can also be supplied without drilling.

The TN (CHILLER) monoblocks are class "T" (43°C amb) while the BT (FREEZER) monoblocks are class "ST" (38°C).

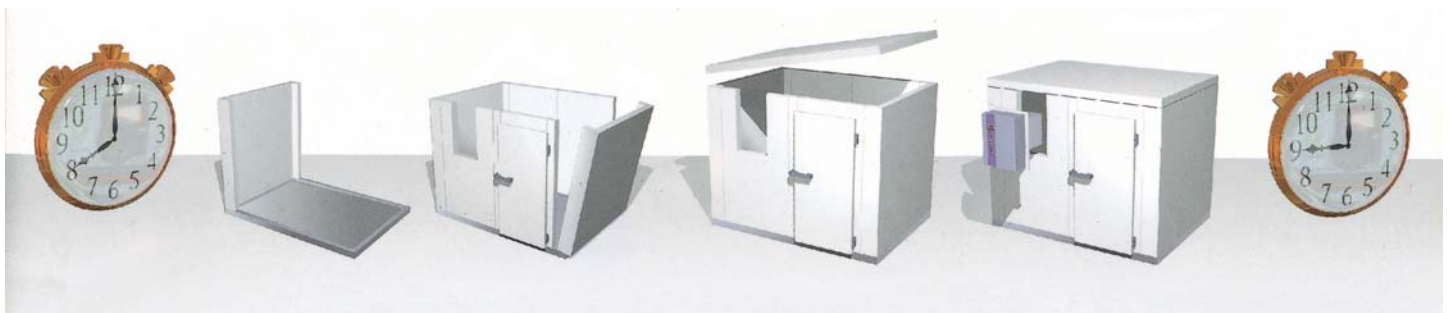




Modularity and flexibility

Thanks to the construction principle adopted, the Friulinox cold rooms can be supplied in any version the market could possibly demand, including with blind or glass doors.

Upon request, Friulinox can also build cold rooms to the customer's specifications of thickness, shape and size.



Big capacity, small size

Ever attentive to the needs of its customers, Friulinox has created a series of corner cold rooms for all those applications where space is reduced to a minimum.



Wall or ceiling

In order to best satisfy the market's demands, the Friulinox corner cold rooms can be equipped with motors installed on either the ceiling or wall.

- The locking systems consist of galvanised eccentric hooks.
- The digital control, in a user-friendly position, constantly monitors the temperature of the cold room.
- The internal light and internal safety handle are supplied as standard in the Friulinox cold rooms.
- The compensation valve of the BT (FREEZER) versions is supplied as standard to guarantee easy opening, also within the space of a few seconds.
- Glass door with LED light.
- Cold rooms built with rounded corners for easy cleaning.





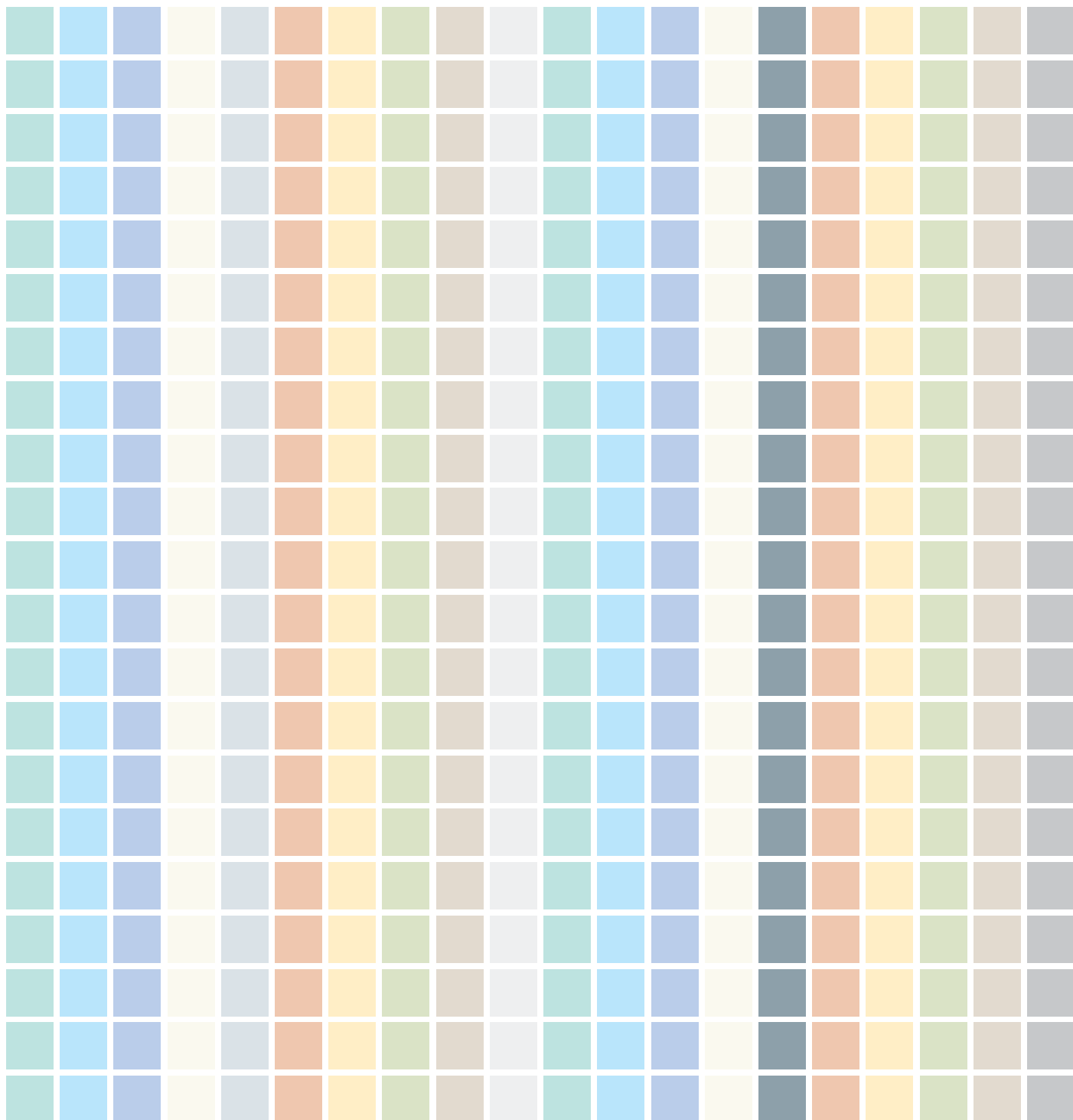
An answer to every need

The line of mini cold rooms and corner cold rooms is designed to meet most of the market's product preservation requirements.

Moreover, Friulinox can design, build, assemble, test and ship any type of cold room in the event of special needs.

Low energy consumption results in cost-effectiveness.





friulinox

Friulinox ALI S.p.A.

Via Treviso, 4 - 33083 Taiedo di Chions (PN) - ITALY

Tel. +39 0434 635411 - Fax +39 0434 635444

info@friulinox.com - www.friulinox.com

